

tower update 10 26 21



revised concept imagery

- 1 building will be A5 Occupancy, Type IA Construction to hit height requirements
- 2 design team will need to meet with fire marshal (bryant beddard) to verify removal of sprinkler and fire alarm requirements without a fire load. (ISS has experience with this process for open air structures)
- 3 code egress requires 2 ways off from top of structure - potentially this can be accomplished with a divided stair that has dedicated up + down
- 4 A5 occupancy requires plumbing fixtures - this need can be absolved if there are permanent facilities on site
- 5 building will need to be deemed an amusement structure to avoid ADA requirements (elevator)

- 1 360 degree wrap-around deck and overlook
- 2 corten steel not galvanized
- 3 people at the top -> 20 to 30
- 4 rooftop shade -> fabric or trellis?
- 5 no screening past rail height
- 6 'primitive'



aerial from southwest

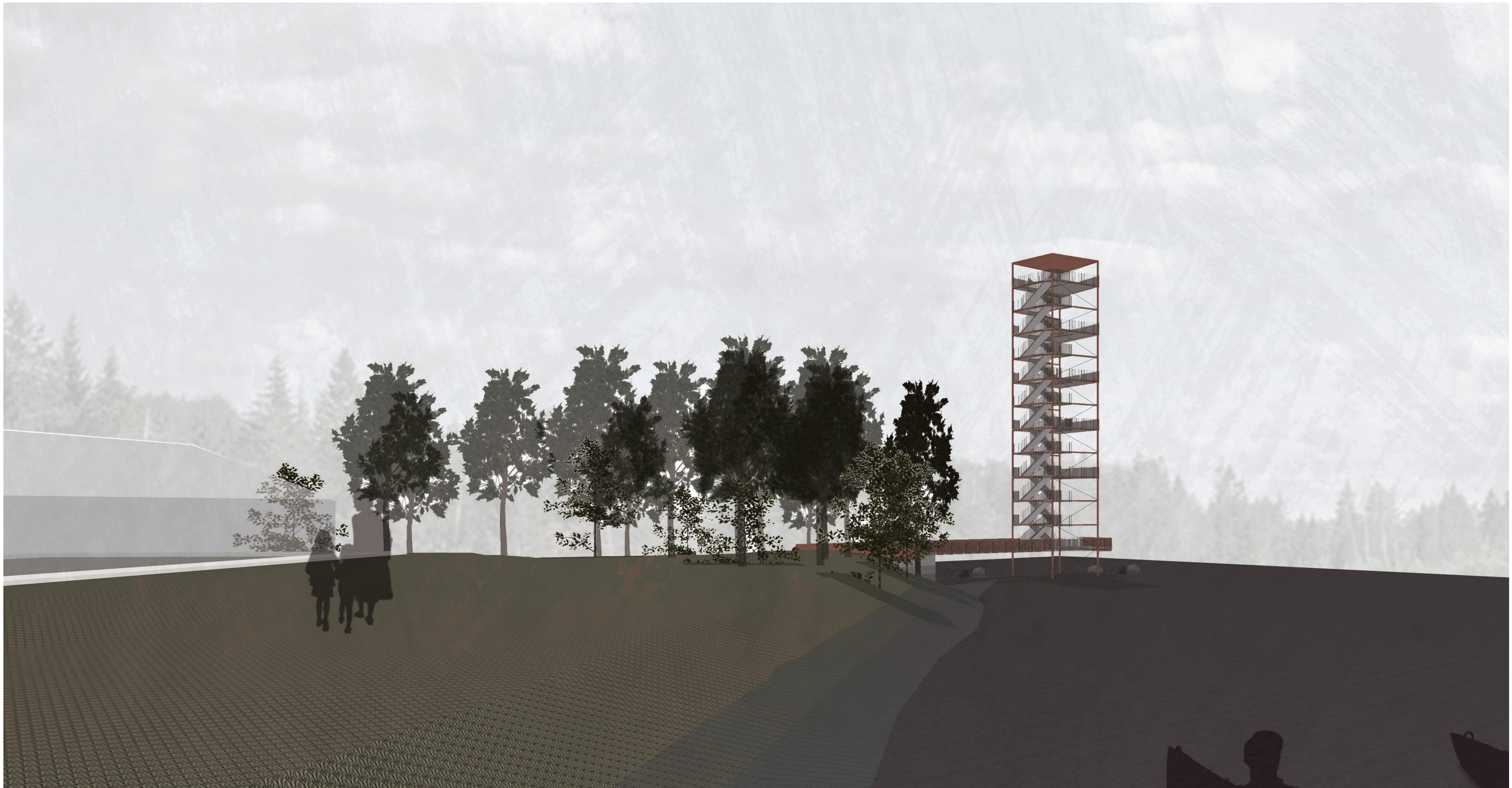




approach from the trees



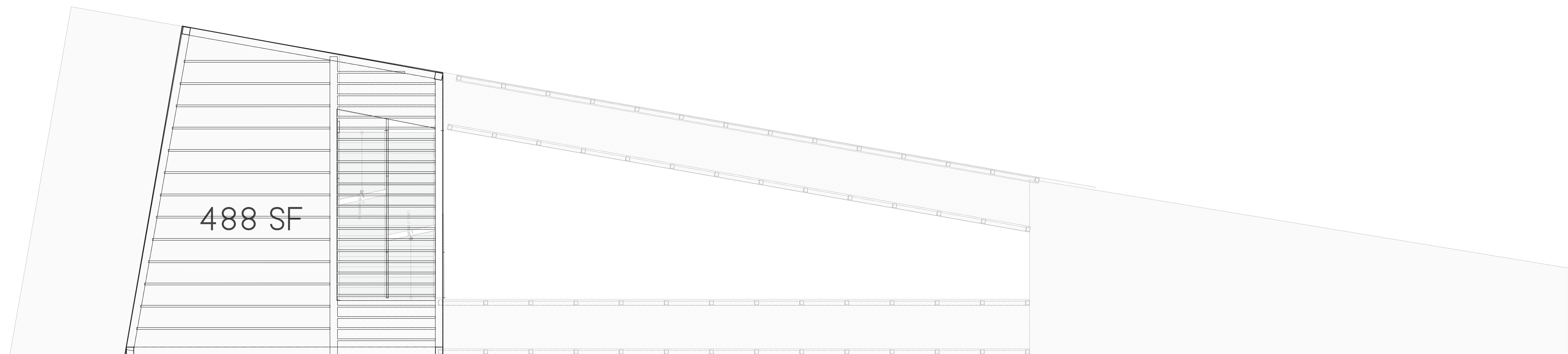
boardwalk entry



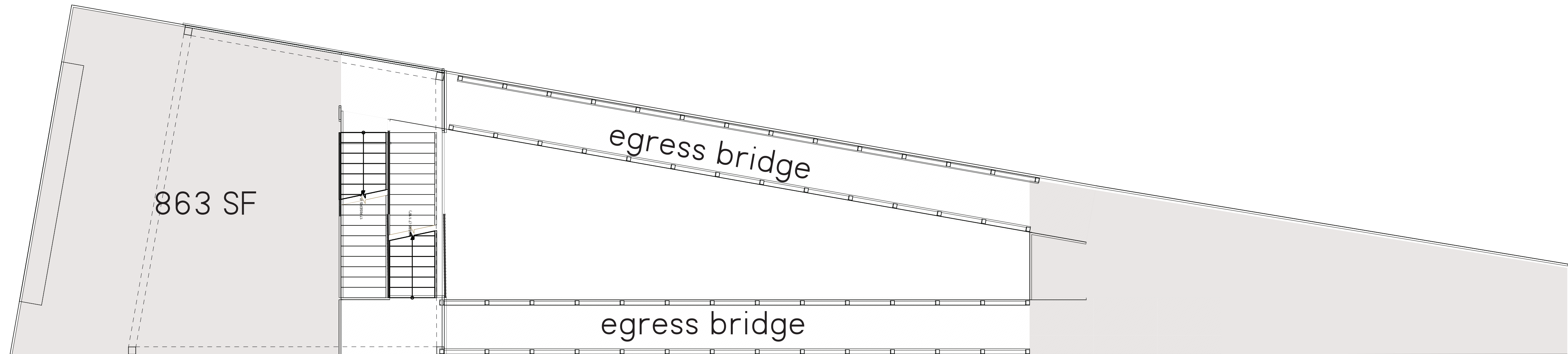
northern shoreline



lakeside from southwest



rooftop plan



base floor plan

