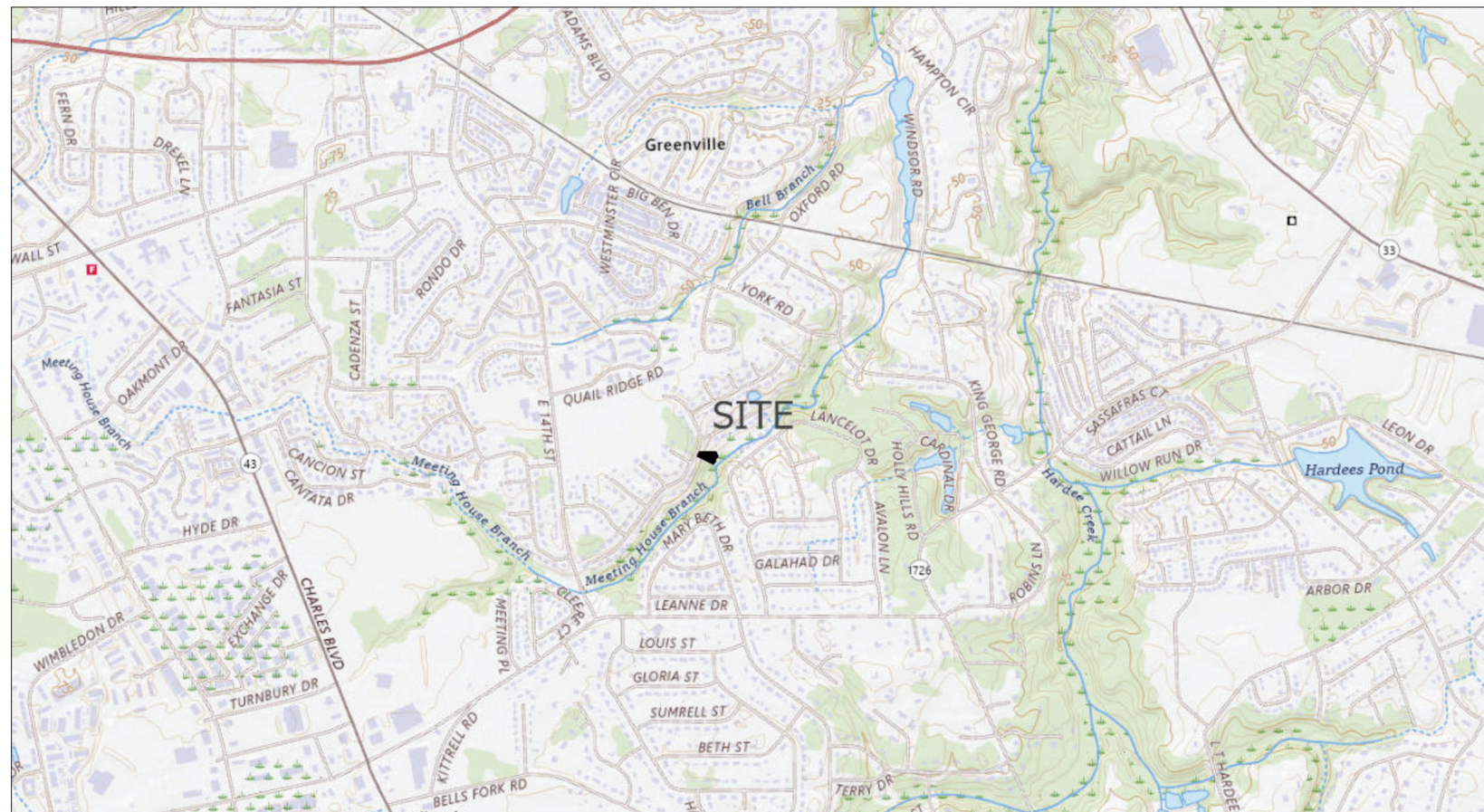
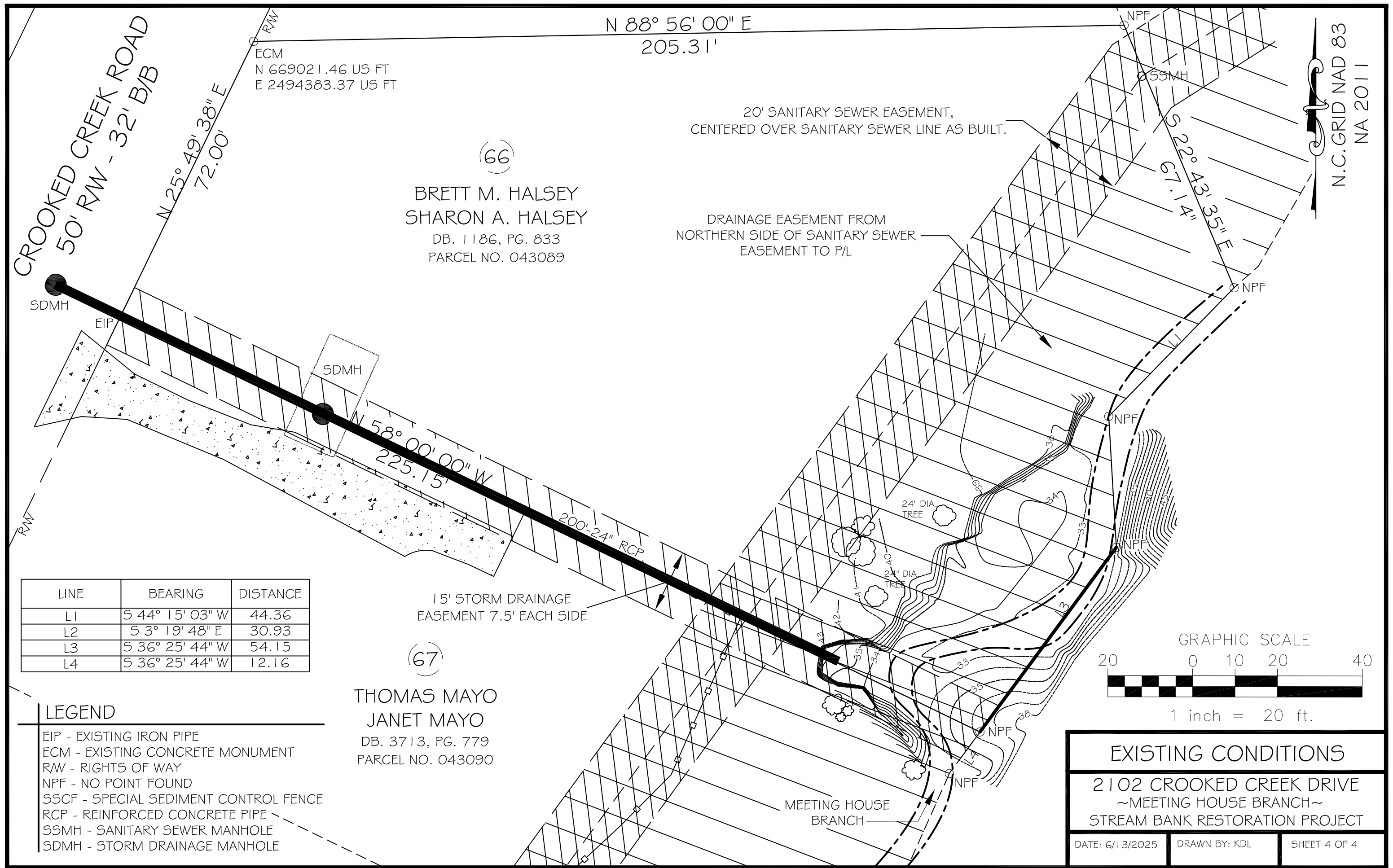


2102 CROOKED CREEK DRIVE ~MEETING HOUSE BRANCH~ STREAM BANK RESTORATION PROJECT

ENGINEERING DEPARTMENT - STORMWATER DIVISION
1500 BEATTY STREET - P.O. BOX 7207
CITY OF GREENVILLE, N.C. PH. (252) 329-4467





N 88° 56' 00" E
205.31'

ECM
N 669021.46 US FT
E 2494383.37 US FT

(66)
BRETT M. HALSEY
SHARON A. HALSEY
DB. 1186, PG. 833
PARCEL NO. 043089

N.C. GRID NAD 83
NA 2011

20' SANITARY SEWER EASEMENT,
CENTERED OVER SANITARY SEWER LINE AS BUILT.

DRAINAGE EASEMENT FROM
NORTHERN SIDE OF SANITARY SEWER
EASEMENT TO P/L

15' STORM DRAINAGE
EASEMENT 7.5' EACH SIDE

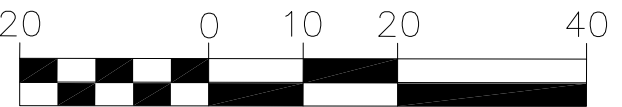
(67)
THOMAS MAYO
JANET MAYO
DB. 3713, PG. 779
PARCEL NO. 043090

MEETING HOUSE
BRANCH

CROOKED CREEK ROAD
50' RW - 32' B/B

N 25° 49' 38" E
72.00'

GRAPHIC SCALE



1 inch = 20 ft.

LINE	BEARING	DISTANCE
L1	S 44° 15' 03" W	44.36
L2	S 3° 19' 48" E	30.93
L3	S 36° 25' 44" W	54.15
L4	S 36° 25' 44" W	12.16

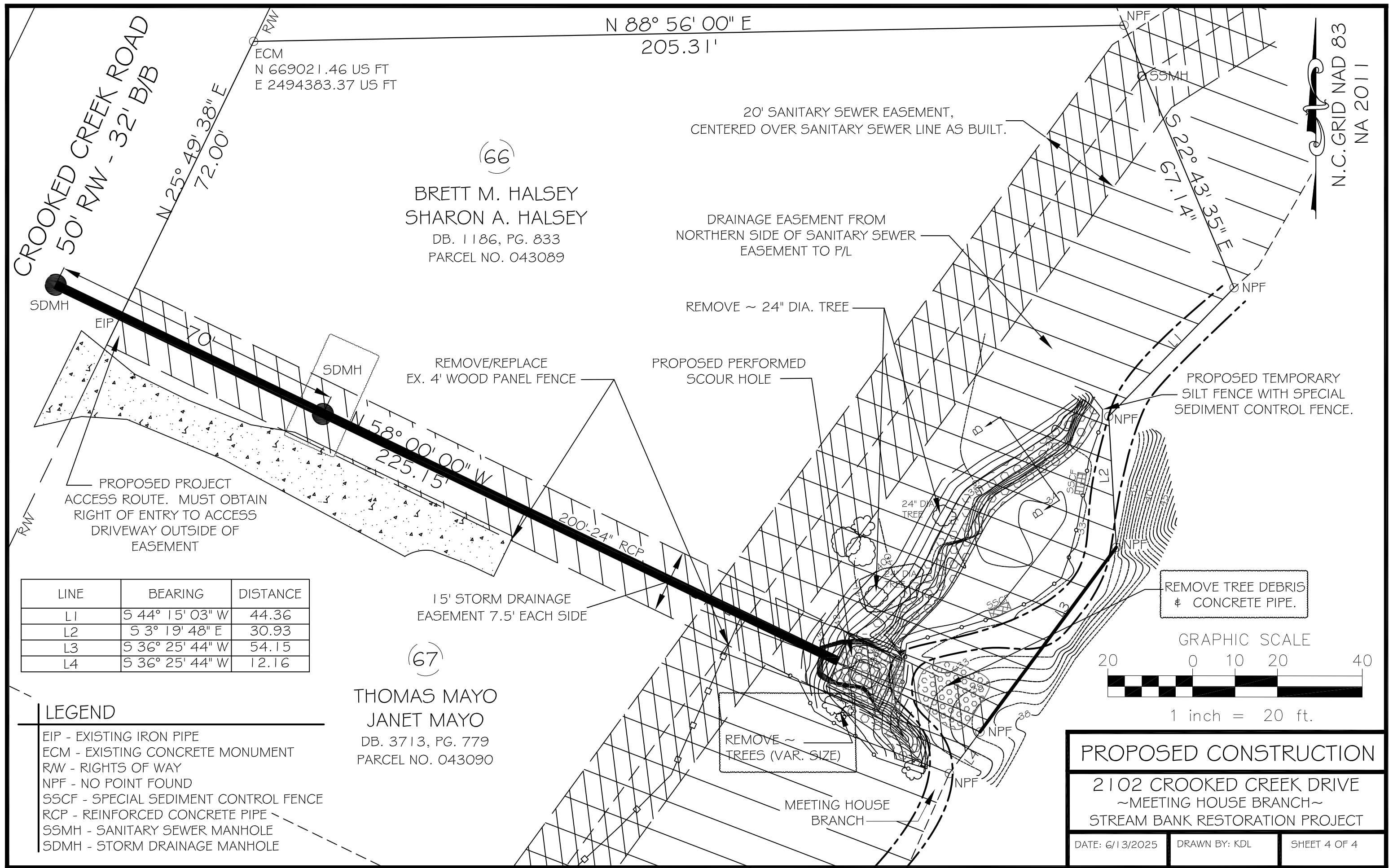
LEGEND

- EIP - EXISTING IRON PIPE
- ECM - EXISTING CONCRETE MONUMENT
- R/W - RIGHTS OF WAY
- NPF - NO POINT FOUND
- SSCF - SPECIAL SEDIMENT CONTROL FENCE
- RCP - REINFORCED CONCRETE PIPE
- SSMH - SANITARY SEWER MANHOLE
- SDMH - STORM DRAINAGE MANHOLE

EXISTING CONDITIONS

2102 CROOKED CREEK DRIVE
~MEETING HOUSE BRANCH~
STREAM BANK RESTORATION PROJECT

DATE: 6/13/2025 DRAWN BY: KDL SHEET 4 OF 4



LINE	BEARING	DISTANCE
L1	S 44° 15' 03" W	44.36
L2	S 3° 19' 48" E	30.93
L3	S 36° 25' 44" W	54.15
L4	S 36° 25' 44" W	12.16

- LEGEND
- EIP - EXISTING IRON PIPE
 - ECM - EXISTING CONCRETE MONUMENT
 - R/W - RIGHTS OF WAY
 - NPF - NO POINT FOUND
 - SSCF - SPECIAL SEDIMENT CONTROL FENCE
 - RCP - REINFORCED CONCRETE PIPE
 - SSMH - SANITARY SEWER MANHOLE
 - SDMH - STORM DRAINAGE MANHOLE

(67)
THOMAS MAYO
JANET MAYO
DB. 3713, PG. 779
PARCEL NO. 043090

PROPOSED CONSTRUCTION

2102 CROOKED CREEK DRIVE
~MEETING HOUSE BRANCH~
STREAM BANK RESTORATION PROJECT

DATE: 6/13/2025

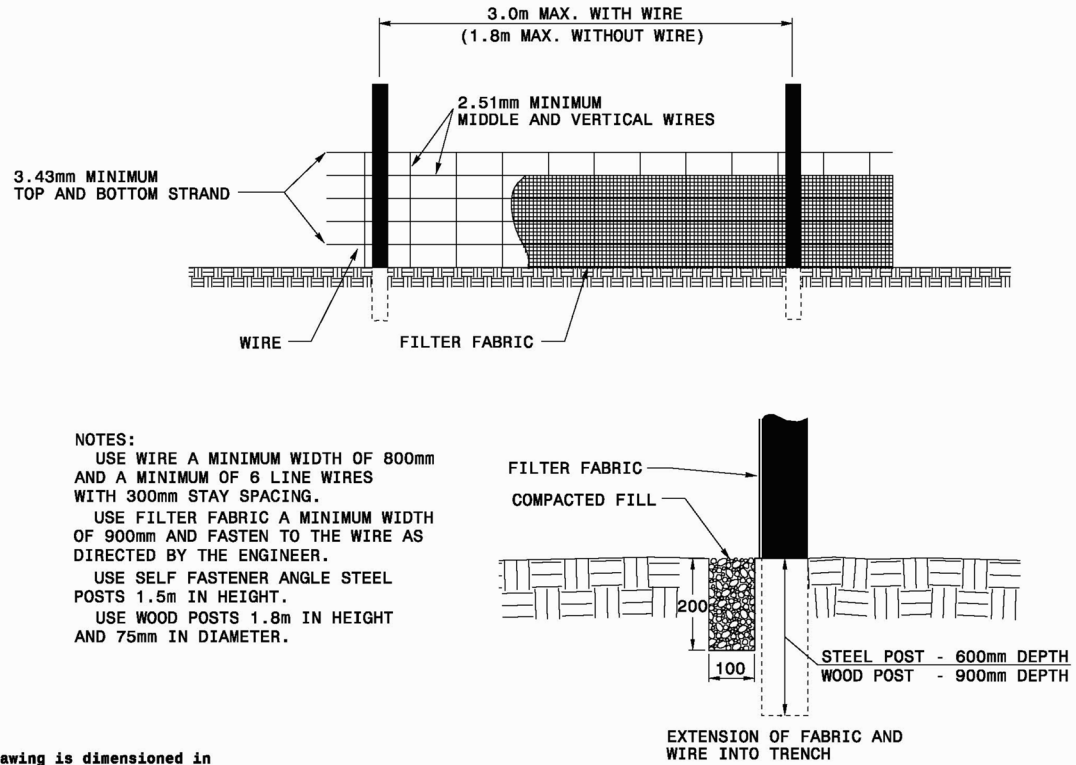
DRAWN BY: KDL

SHEET 4 OF 4

STATE OF NORTH CAROLINA
DEPT. OF TRANSPORTATION
DIVISION OF HIGHWAYS
RALEIGH, N.C.

METRIC STANDARD DRAWING FOR
TEMPORARY SILT FENCE

SHEET 1 OF 1
1605.01

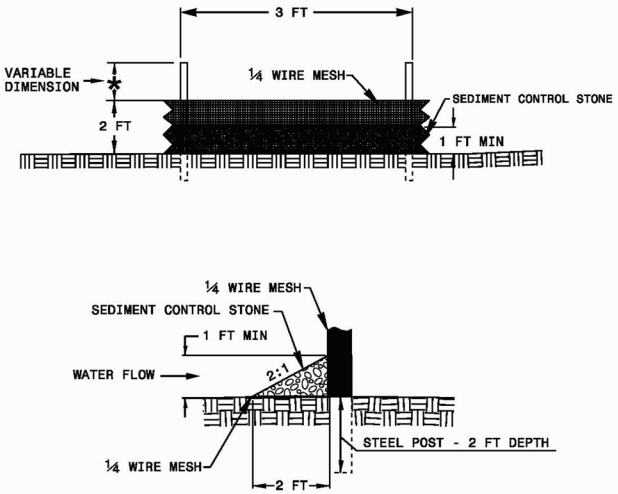


STATE OF NORTH CAROLINA
DEPT. OF TRANSPORTATION
DIVISION OF HIGHWAYS
RALEIGH, N.C.

METRIC STANDARD DRAWING FOR
TEMPORARY SILT FENCE

SHEET 1 OF 1
1605.01

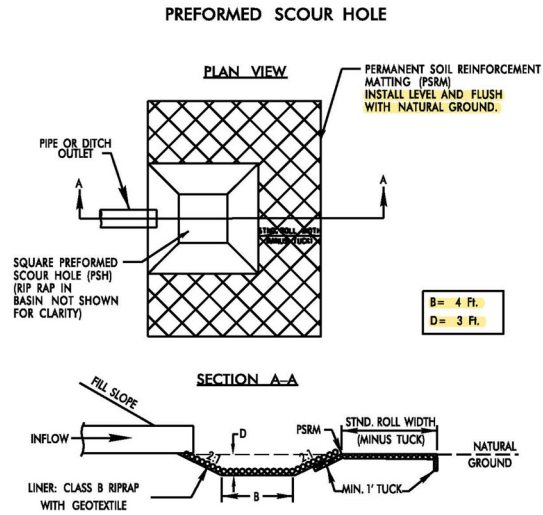
- NOTES**
- USE NO. 5 OR NO. 57 STONE FOR SEDIMENT CONTROL STONE.
 - USE HARDWARE CLOTH 24 GAUGE WIRE MESH WITH 1/4 INCH MESH OPENINGS.
 - INSTALL 5 FT. SELF FASTENER ANGLE STEEL POST 2 FT. DEEP MINIMUM.
 - ATTACH HARDWARE CLOTH TO POSTS WITH WIRE STAPLE OR OTHER ACCEPTABLE METHODS.
 - SPACE POSTS A MAXIMUM OF 3 FT.
 - FOR INSTALLATION BETWEEN SECTIONS OF SILT FENCE, EXTEND SEDIMENT CONTROL STONE A MINIMUM OF 12" ON EACH SIDE OF SPECIAL SEDIMENT CONTROL FENCE SECTION.



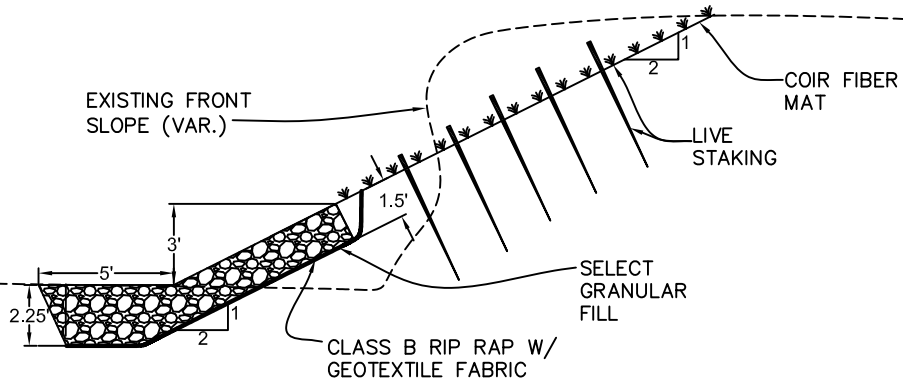
STATE OF NORTH CAROLINA
DEPT. OF TRANSPORTATION
DIVISION OF HIGHWAYS
RALEIGH, N.C.

ROADWAY STANDARD DRAWING FOR
SPECIAL SEDIMENT CONTROL FENCE

SHEET 1 OF 1
1606.01



- NOTES:**
- LIVE STAKES SHALL BE 1/2" - 2" IN DIAMETER. STAKES SHALL ALSO BE 2FT. -3FT IN LENGTH.
 - LIVE STAKING PLANT MATERIAL SHALL CONSIST OF A RANDOM MIX MADE UP OF 50% BLACK WILLOW (*Salix nigra*) AND 50% SILKY DOGWOOD (*Cornus amomum*). OTHER SPECIES MAY BE SUBSTITUTED UPON APPROVAL OF THE ENGINEER. ALL PLANT MATERIAL SHALL BE HARVESTED LOCALLY (WITHIN THE SAME PHYSIOGRAPHIC ECOREGION AND PLANT HARDINESS ZONE) OR PURCHASED FROM A LOCAL NUSERY, WITH THE APPROVAL OF THE ENGINEER. ALL LIVE STAKES SHALL BE DORMANT AT THE TIME OF ACQUISITION AND PLANTING.
 - SEE PROJECT SPECIFICATIONS FOR ADDITIONAL INFORMATION.



STONE TOE BANK PROTECTION / LIVE STAKING
SECTION B-B

DETAIL SHEET

2102 CROOKED CREEK DRIVE
~MEETING HOUSE BRANCH~
STREAM BANK RESTORATION PROJECT

DATE: 6/13/2025

DRAWN BY: KDL

SHEET 4 OF 4