



Economic Thrust Projects



Jobs & Tax Base

Investments that lead directly to new job creation and/or business development



Convention Center Upgrades (Dedicated Funding Source)

Estimated Cost:

\$5 Million





10th Street Corridor Innovation Station District

Estimated Cost:
\$3 Million



American Tobacco District



Medical Office/Research park

Estimated Cost:
\$2.5 Million



Fontaine Research Park
University of Virginia



Small Business Incubator

Estimated Cost:
\$1.5 Million





Art Incubator

Estimated Cost:
\$1.5 Million



Photo Courtesy of Town of Siler City



Local Infrastructure Investment

Investments that lead to follow-on
investment by the private sector



GTAC

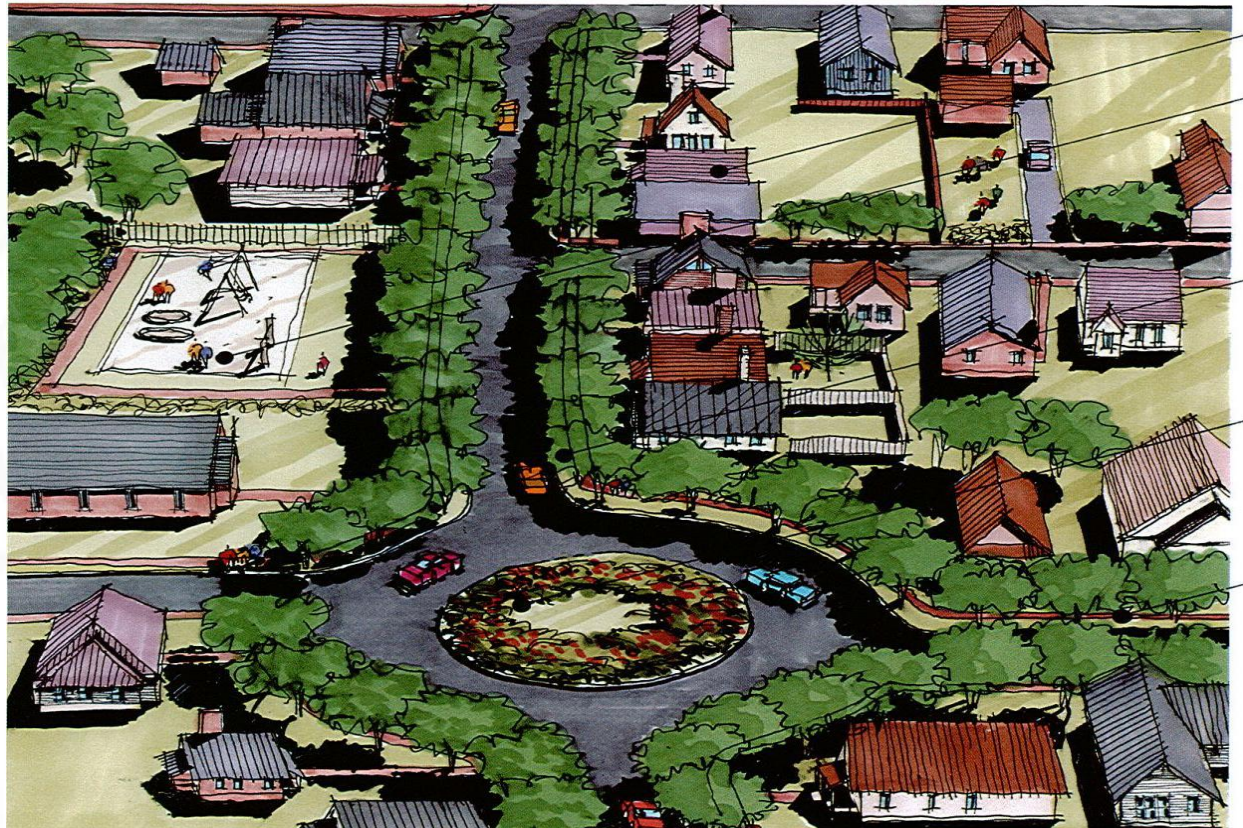


Estimated Cost:
\$7 – \$10 Million



West 5th Street-Scape Phase II

Estimated Cost:
\$2 Million



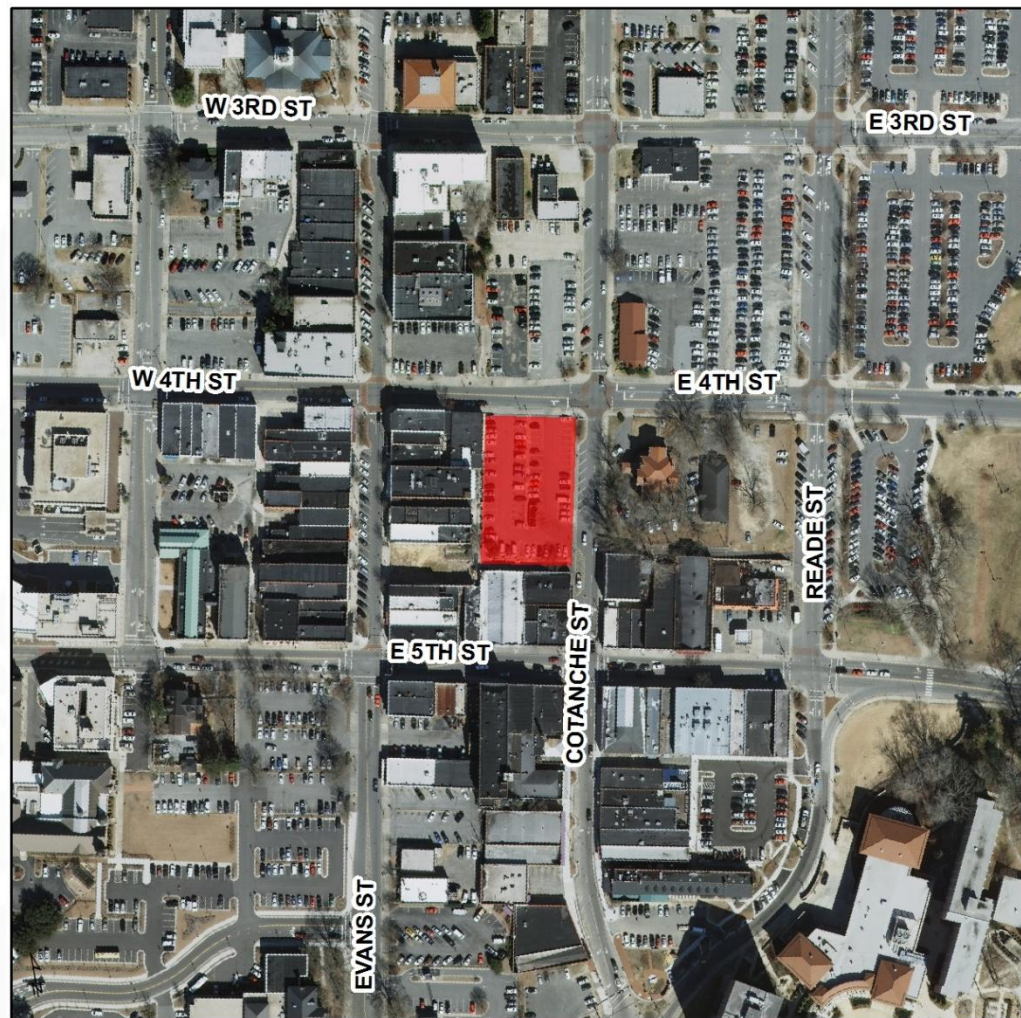


CITY OF GREENVILLE, NC

CITY COUNCIL PLANNING SESSION

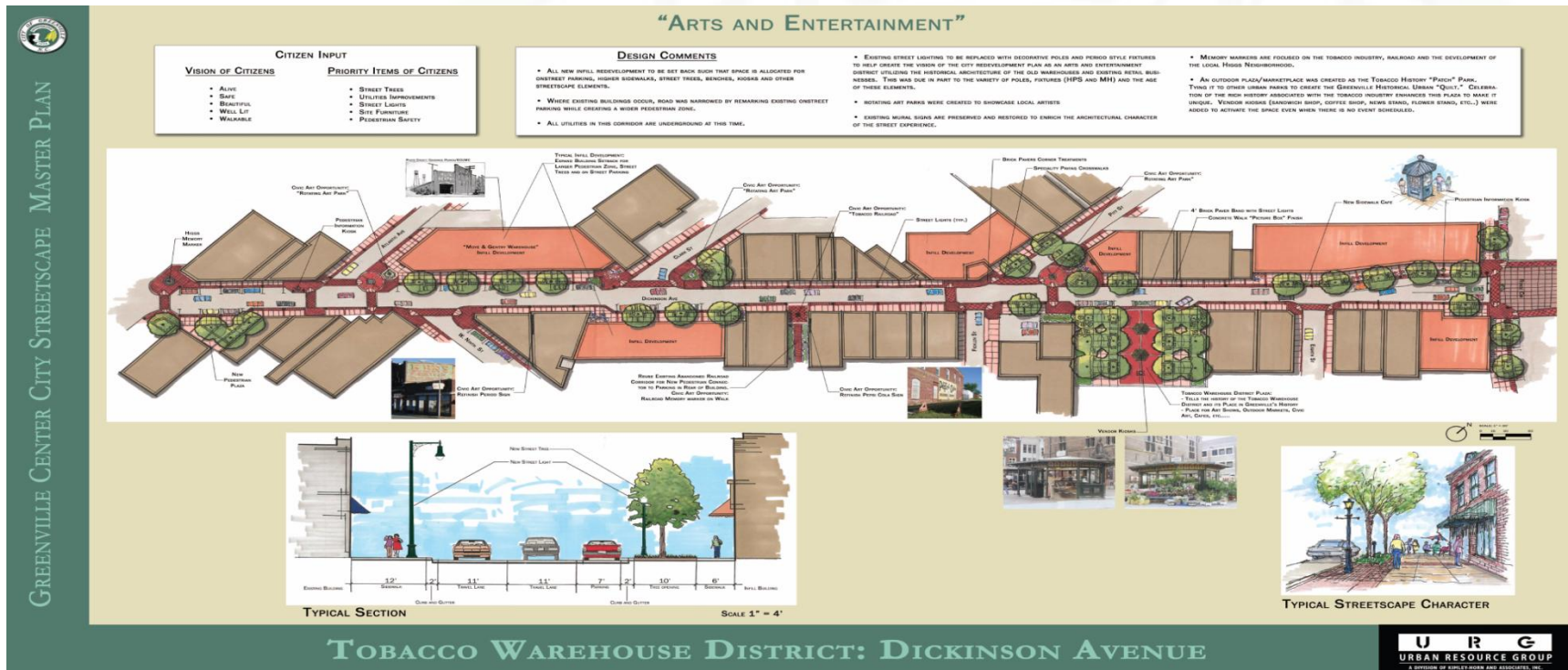
Uptown Parking Deck

Estimated Cost:
\$3.8Million





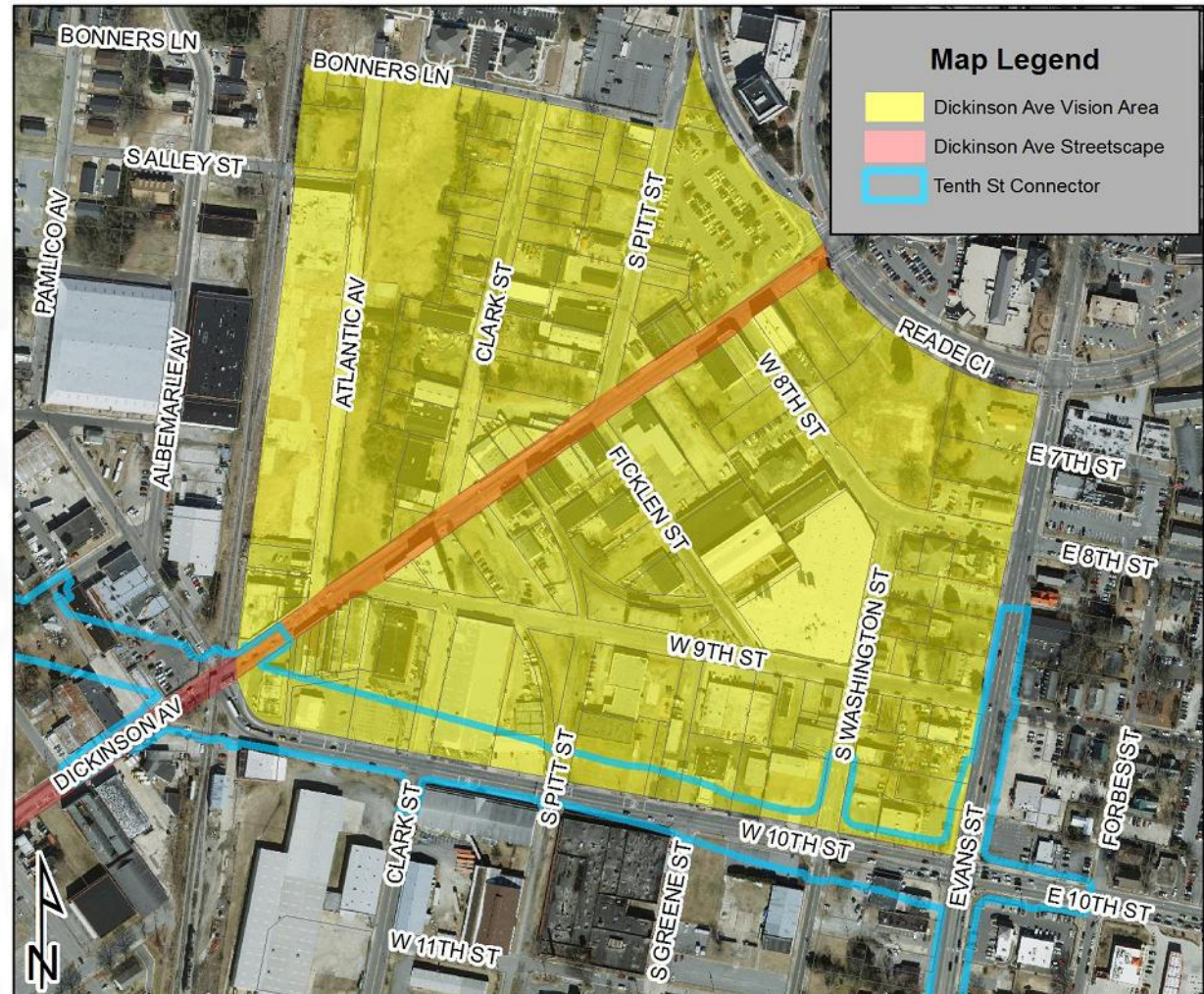
Estimated Cost:
\$3 Million





Dickinson Avenue Master Plan

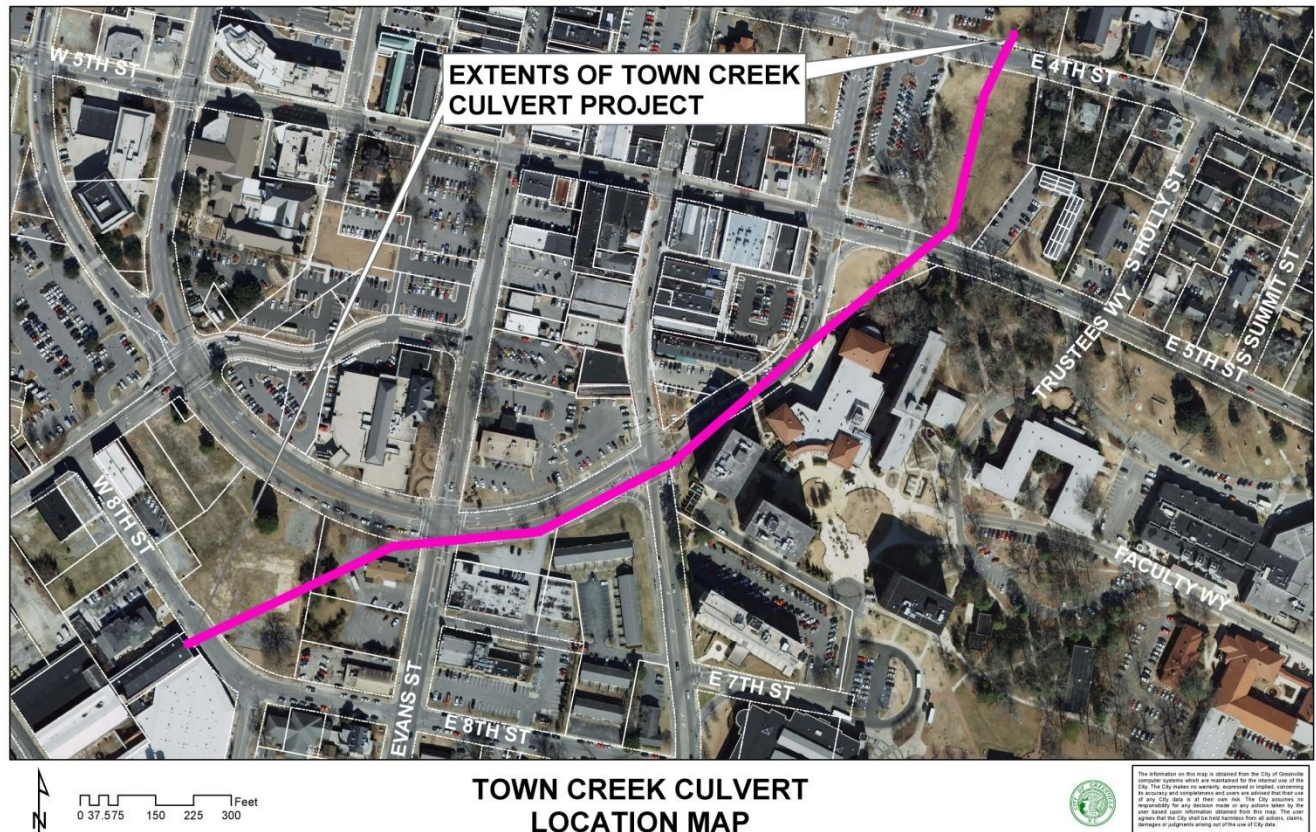
Estimated Cost:
\$150,000





Downtown Storm Water Project

Estimated Cost:
\$4 Million





First Street Area Improvements

Estimated Cost:
\$3 Million



FUTURE-RECOMMENDATIONS AND OPPORTUNITIES

PRINCIPLE G – NARROW FIRST STREET

Proposed Strategies

Recommendations:

- Narrow First Street to a two-lane cross section with bicycle lanes.
- Provide additional parallel parking on the north side of First Street.
- Expand the sidewalk on the northside of First Street to a 15-20' width, allowing for vendor space along the street.
- Provide streetscape plantings and furnishings, including benches with views into the park, pedestrian lighting, bike racks and trash receptacles.
- Provide safe and accessible crossings at all key nodes of entrance into the Town Common.



Southern edge of park



Quality of Life Investments

Investments that make Greenville an
enticing place for business to invest and
citizens to work



East Side Park

Estimated Cost:
\$4.1 Million

Implementation

PHASE I:

- Dog Park
- Maintenance/Storage Facility
- All trails from Dog Park south to NC-33
- Associated Amenities
- Associated Sitework



General Area of Site Plan for Phase I Improvements



Uptown Theater

Estimated Cost:
\$3 Million





Go Science Center with BMX Museum

Estimated Cost:
\$4 Million





Tar River Pedestrian Bridge

Estimated Cost:
\$700,000 to
\$1 Million



FUTURE – RECOMMENDATIONS AND OPPORTUNITIES

PRINCIPLE E – ADDRESS PRIORITIES IDENTIFIED BY PUBLIC

The citizens of Greenville provided public input during sessions that were designed to identify specific concerns with the park as it currently functions. A tally was taken and the concerns were prioritized in order by the number of votes received as being the first, second or third item of importance.

The public's priorities are as follows:

1. Tar River Pedestrian Bridge connecting to River Park North.
2. Public structures including public restrooms.
3. Site improvements.
4. Civic art.
5. Gardens.
6. Memorials and need for careful planning for future memorials.
7. River access, including kayaking.
8. Vendor spaces.

Proposed Strategies

Recommendations:

Priority 1: Tar River Pedestrian Bridge

Due to the existing wetland conditions at River Park North across from the Town Common site, the Design Team is recommending to study the feasibility of using the existing Greene Street Bridge to accommodate an appropriately sized and safe connection.

A potential opportunity is to provide the ability to have a river ferry escort people down the river and connect to River Park North in that manner.

Priority 2: Public Structures

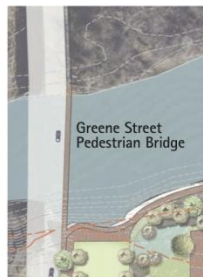
The Master Plan calls for the creation of a number of public structures including a restroom on the east side of the park, which could also house a cafe or snack bar. A kayak and bike rental location and an Education Center providing classes for children and



Priority 1: Pedestrian Bridge



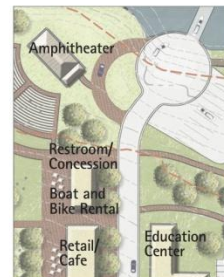
Priority 2: Public Structures



Priority 1: Pedestrian Bridge



Priority 2: Public Structures





River Study

Estimated Cost:
\$100,000



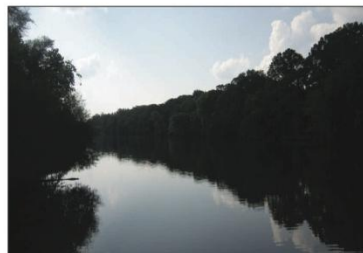
FUTURE - RECOMMENDATIONS AND OPPORTUNITIES

PRINCIPLE C - MAKE RIVER MORE ACCESSIBLE AND VISIBLE

Many people are naturally drawn to water as an element. There is also a connection to the Tar River on many levels, as historically it was an important economic driver. It was utilized for religious baptisms and even to this day, many folks access the river for recreational purposes, including boating, kayaking and fishing. The river also provides a strong connection back to the environment. Allowing people to experience the river in many different ways will be a tremendous benefit.

Existing Conditions

- There are currently few opportunities to access the river, except for the battered boat ramp and the tiny wooden fishing pier.
- Depending upon the tidal height of the river, the top of the bulkhead can be over ten feet from the river, providing little psychological connection.
- A vinyl chain link fence runs along the edge of the bulkhead which does little to reinforce the connection to the river.



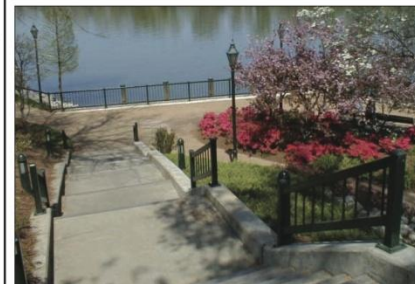
Existing walk along river



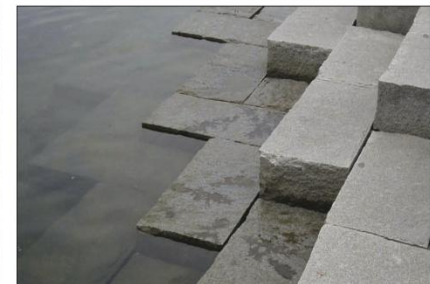
Promenade and swings along waterfront



Espanade along river front with seating, shade and lighting



Gardens at the waters edge



Visual connections and access to the water



Regional Transportation Projects

Investments that make the Greenville
area more attractive for business and
industrial investment



Interstate Designation

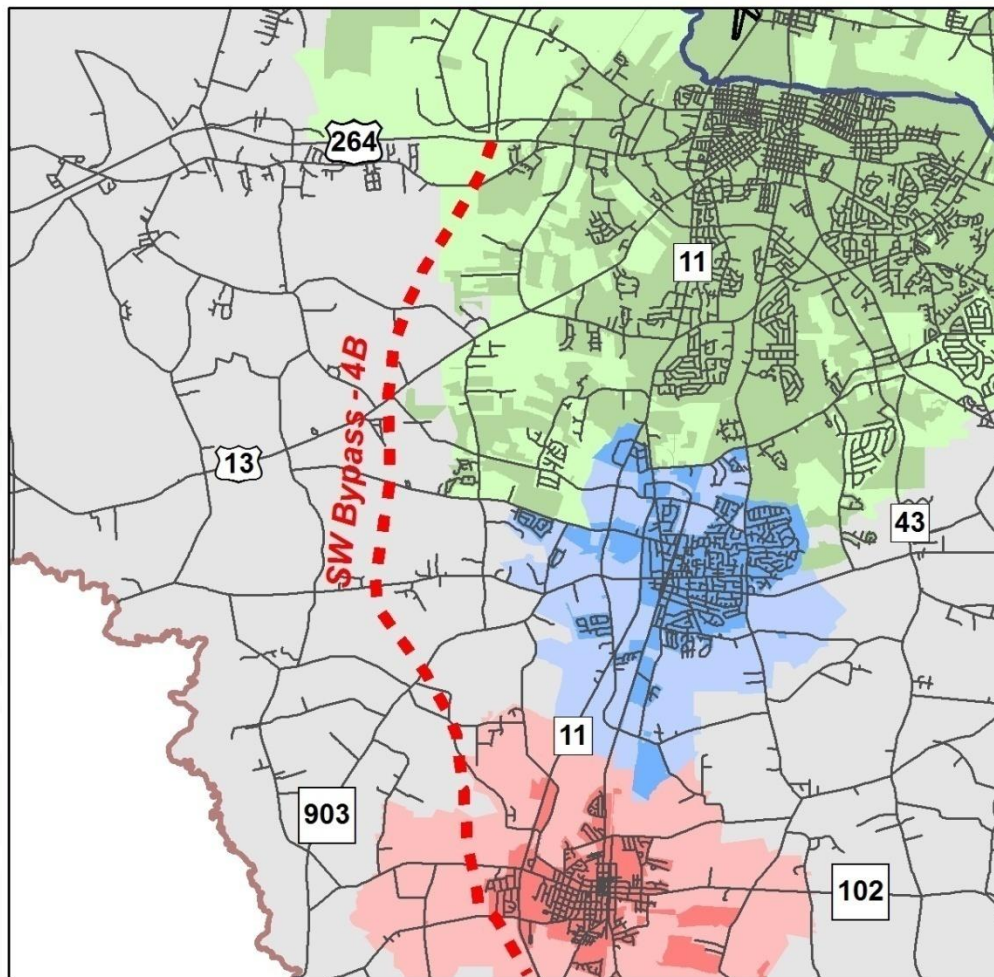
Estimated Cost:
\$44 Million





S.W. Bypass Loop

Estimated Cost:
\$226 Million
(100% State Funded)





Expanded Air Service

Estimated Cost:
\$TBD

